

FULLRECO4US (CA20133) – MC2

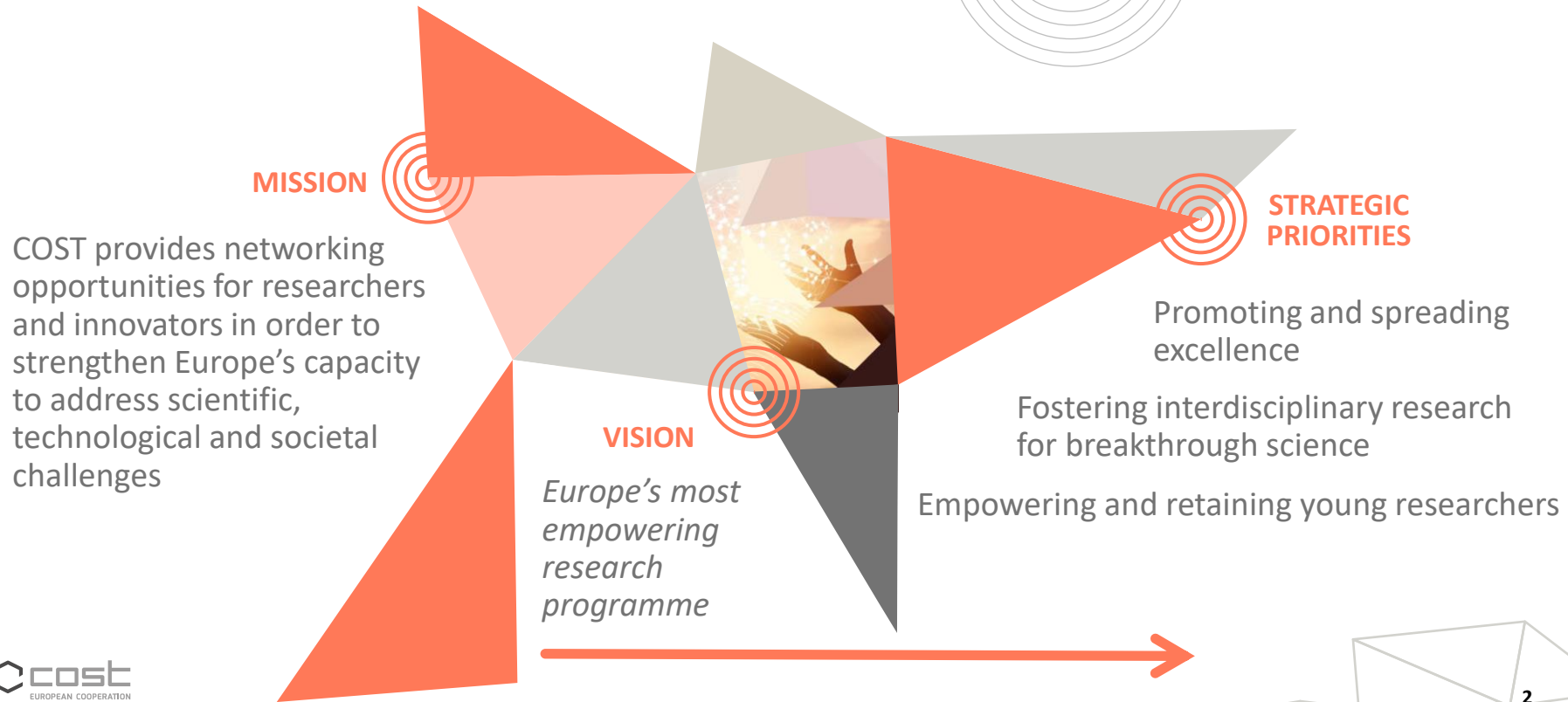
Mickael Pero – Science Officer



Boras, 23/05/2022



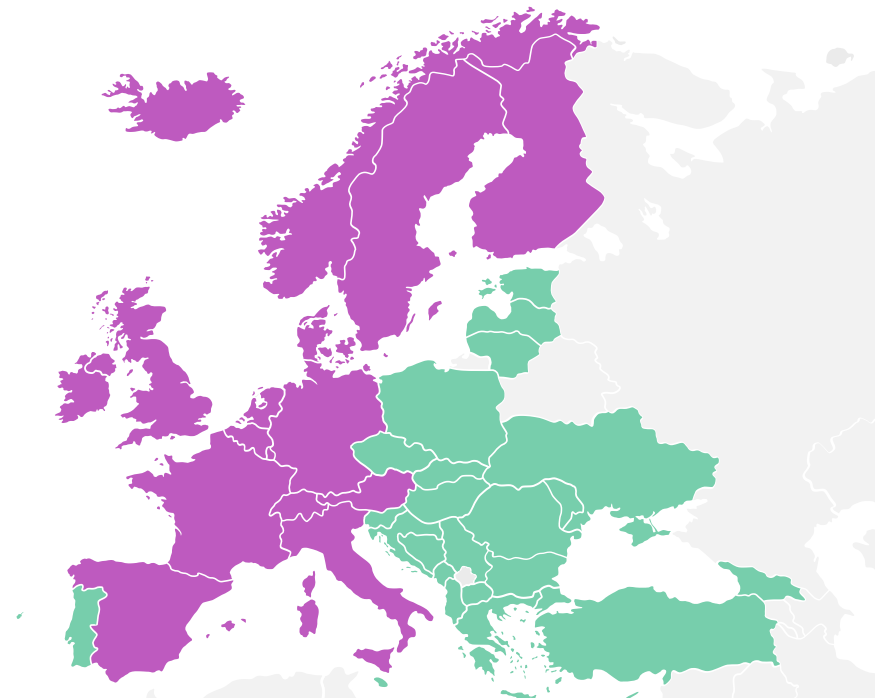
European Cooperation in Science & Technology



COST Membership

40 Members

- Albania
- Austria
- Belgium
- Bosnia and Herzegovina
- Bulgaria
- Croatia
- Cyprus
- Czech Republic
- Denmark
- Estonia
- Finland
- France
- Georgia
- Germany
- Greece
- Hungary
- Iceland
- Ireland
- Italy
- Latvia
- Lithuania
- Luxembourg
- Malta
- The Republic of Moldova
- Montenegro
- The Netherlands
- The Republic of North Macedonia
- Norway
- Poland
- Portugal
- Romania
- Serbia
- Slovakia
- Slovenia
- Spain
- Sweden
- Switzerland
- Turkey
- Ukraine
- United Kingdom

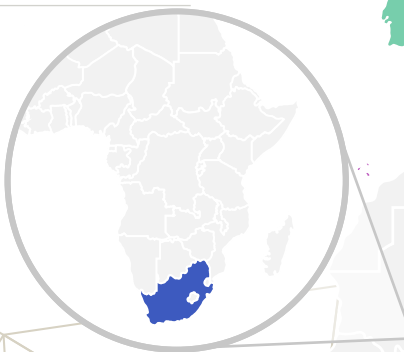


1 Cooperating Member

- Israel

1 Partner Member

- South Africa



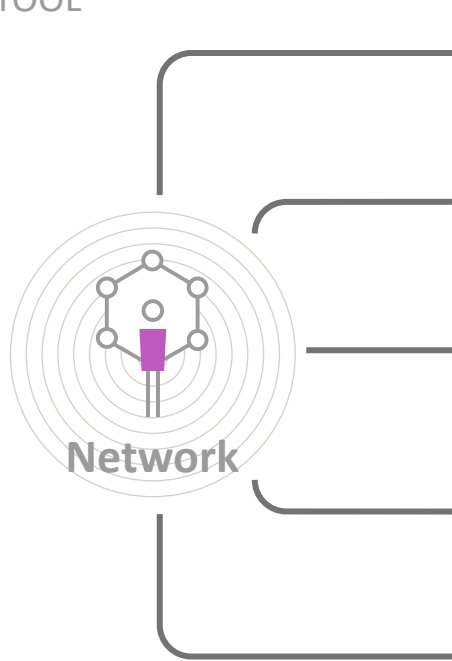
- COST Members non-ITCs (Inclusiveness Target Countries)
- COST Members ITCs
- COST Cooperating Member
- COST Partner Member

COST Actions

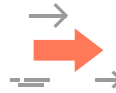
AN EFFICIENT NETWORKING TOOL

COST provides funding
for research coordination
and capacity building
activities

COST is not funding research
itself,
but pooling resources
and research results
by networking



Memorandum
of Understanding



4 years



Min 7 countries in proposal, average
30 countries in H2020



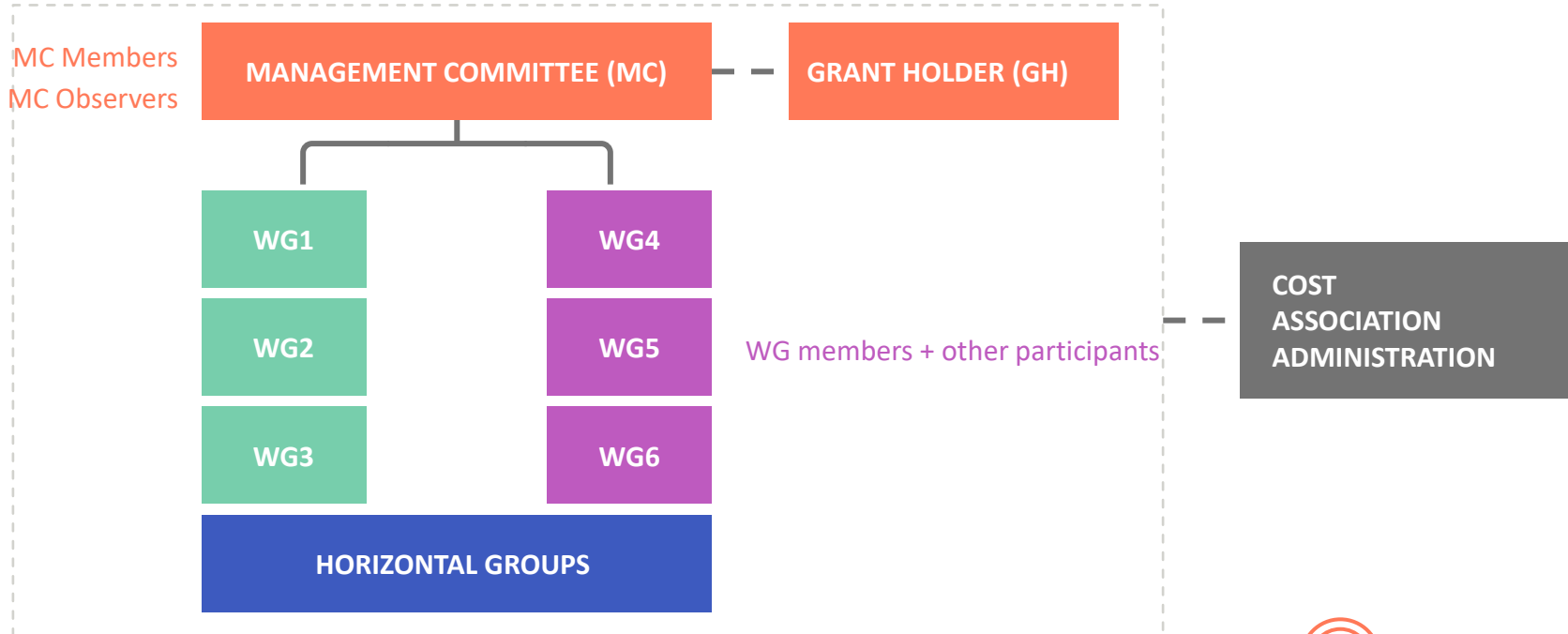
Research coordination
and capacity building activities



~ €600,000 over lifetime

COST Action structure

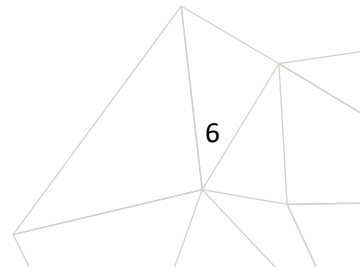
PARTICIPATION





MC Members

- Manage the network e.g. planning of activities, participation, budget allocation, ...
- Represent the COST Member State's national community of researchers and innovators on the Action's topic
- Nominated by their COST National Coordinator (up to 2)
- Any individual with an affiliation in a legal entity from a COST Full / Cooperating Members

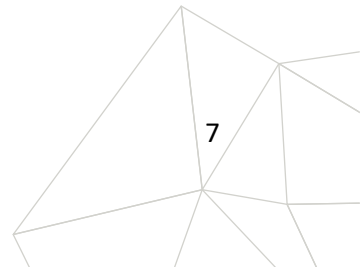




MC Observers

- Contribute to the network at the management level e.g. planning of activities, participation, budget allocation, ...
- Represent the COST Partner Member or Specific Organisation community of researchers and innovators on the Action's topic
- Any individual with an affiliation in a legal entity from a...
 - COST Partner member*, nominated by their COST National Coordinator (up to 2)
 - Specific Organisation, nominated by the Responsible for nominations (up to 1)

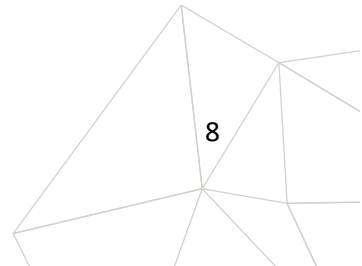
*Currently only South Africa





WG members

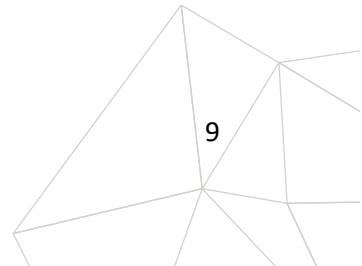
- Contribute to the realisation of the Action's objectives
- Any individual with an affiliation in a legal entity anywhere in the world approved by the Management Committee (via e-COST)





Note: Working Group members application

- Apply via the COST website
 - WG preference, Scientific Background, Motivation, WG contribution, Substitute? MC member interest?
- Approved applications can be managed via e-COST
 - Action MC must decide within 3 months
- WG members will appear on the Action page of the COST website





Other participants

- Contribute on ad-hoc basis to the objectives of the Action
- Any individual with an affiliation in a legal entity anywhere in the world invited by the Management Committee (via e-COST)